

HIV Ag/Ab 4TH GENERATION ELISA
REF: 790000, 790001, 790005

↘ **SENSITIVITY:** < 10 pg/ml OF HIV-1 P24 STANDARD
< 1 U/ml OF NIBSC INTERNATIONAL STANDARD

↘ **INCUBATION TIME:** 150'

↘ **AVAILABLE FORMAT:** 96T, 192T OR 480T

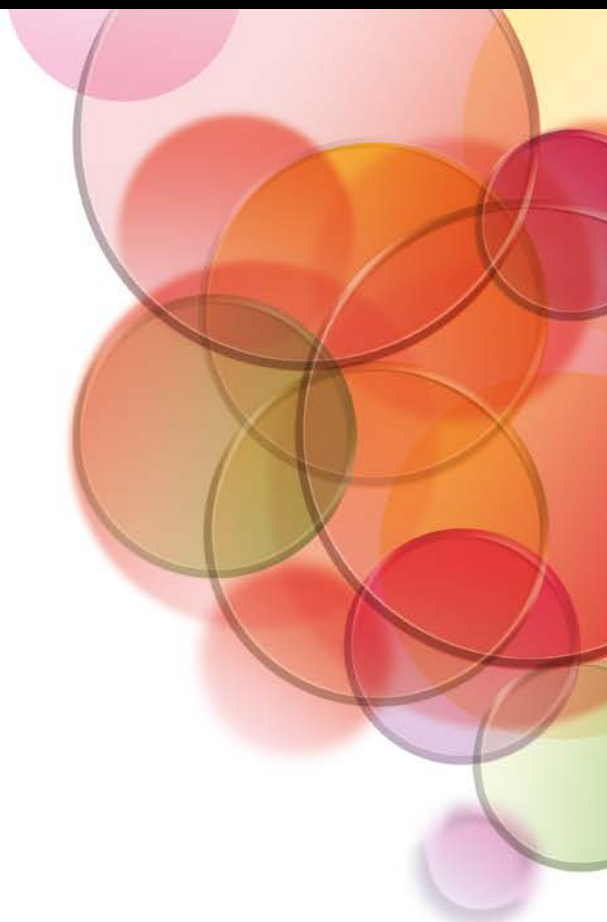
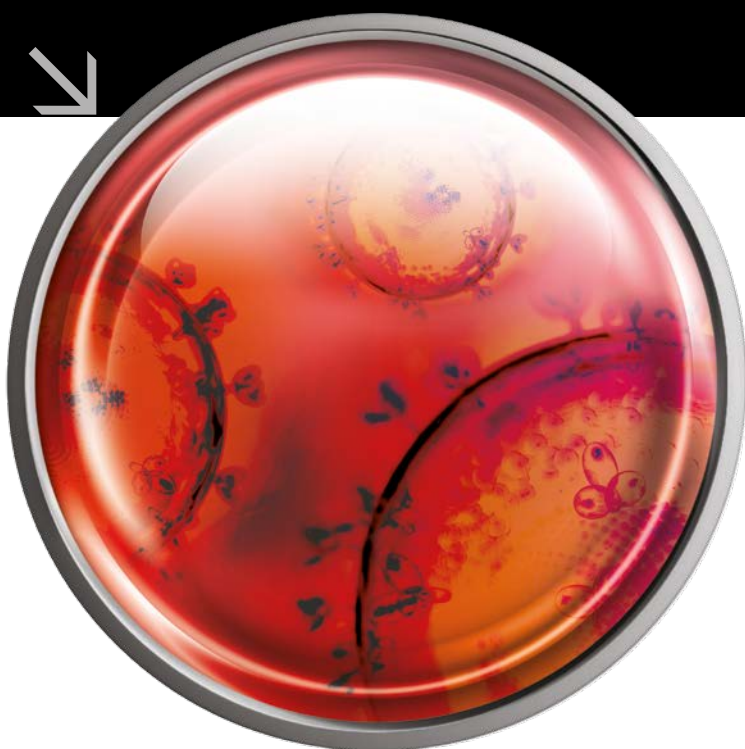
↘ HIV Ag/Ab

4th generation ELISA

CE0123



EN ISO 13485: 2012
CERTIFIED COMPANY



HIV Ag/Ab

4th generation ELISA

The **apDia HIV Ag/Ab ELISA** is a 4th generation solid phase Enzyme-Linked ImmunoSorbent Assay (ELISA) using a mixture of antigens and antibodies for the *in vitro* diagnostic screening in human serum or plasma of antibodies to HIV-1 (all subtypes, including HIV-0), HIV-2 and HIV-P24 antigen.

Acquired immune deficiency syndrome (AIDS) is a set of symptoms resulting from the incapacitation of the human immune system caused by the Human Immunodeficiency Virus (HIV). HIV infection may progress to a symptomatic phase that is characterized by opportunistic infections and that may cause death.

The etiological agent of AIDS, HIV, targets specific types of T cells causing Lymphopenia and affecting T cell mediated immunity. HIV is a member of a retrovirus family with two sub-families: HIV-1 and HIV-2. HIV-1 is more virulent and transmittable than HIV-2. HIV-1 is the cause of HIV infections globally, whereas HIV-2 is found predominantly in the countries of West Africa. As serological cross-reaction between HIV-1 and HIV-2 is highly variable and dependent on the tested sample, antigens for the specific detection of both HIV-1 and HIV-2 are included in the assay. HIV is transmitted through sexual contact with infected persons, sharing needles and syringes with infected people and transfusion of contaminated blood. Enzyme-Linked ImmunoSorbent Assays (such as the apDia HIV Ag/Ab 4th gen ELISA) are recommended for screening human blood and plasma for the presence of anti-HIV antibodies and HIV-P24 antigen.

The ELISA kits offered by apDia are validated on open ELISA automates such as the Dynex Instruments.



Raadsherenstraat 3
2300 Turnhout, Belgium
T +32 14 45 35 99
F +32 14 81 29 45
admin@apdia.be
www.apdiagroup.com

